



# Tallas mínimas de especies pesqueras (Caladero Mediterráneo)



9 cm.



**Boquerón**  
(*Engraulis encrasicolus*)

11 cm.



**Boga**  
(*Boops boops*)



**Mollera / Capellán**  
(*Trisopterus minutus capellanus*)



**Salmonete**  
(*Mullus spp.*)



**Sardina**  
(*Sardina pilchardus*)

12 cm.



**Jureles**  
(*Trachurus spp.*)



**Pageles / Besugos**  
(*Pagellus spp.*)



**Sargos**  
(*Diplodus spp.*)

15 cm.



**Bacaladilla**  
(*Micromesistius pontassou*)



**Gallo**  
(*Lepidotrombus spp.*)



**Salema/Salpa**  
(*Sarpa salpa*)

16 cm.



**Lisas/Mujoles**  
(*Mujil spp.*)



**Palometa negra o japuta**  
(*Brama brama*)

18 cm.



**Caballa**  
(*Scomber scombrus*)

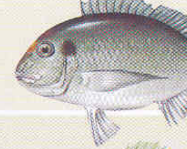


**Estornino**  
(*Scomber japonicus*)

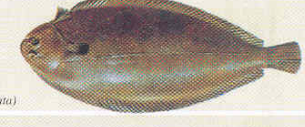


**Pargo**  
(*Pagrus pagrus*)

20 cm.



**Dorada**  
(*Sparus aurata*)



**Lenguado**  
(*Solea vulgaris*)



**Merluza**  
(*Merluccius merluccius*)

23 cm.



**Lubina**  
(*Dicentrarchus labrax*)



**Chirla**  
(*Venus spp.*)

2,5 cm.

7 cm. (l.t.)  
2 cm. (l.c.)



**Cigala**  
(*Nephrops norvegicus*)

25 cm.

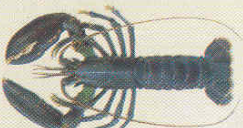


**Aguja**  
(*Belone belone*)



**Langostino**  
(*Panaeus kerathurus*)

10 cm.



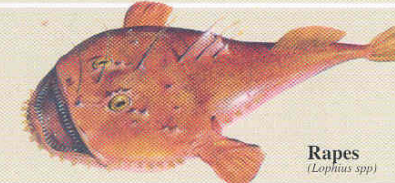
**Langosta**  
(*Palinuridae*)

24 cm.

**Bogavante**  
(*Homarus gammarus*)

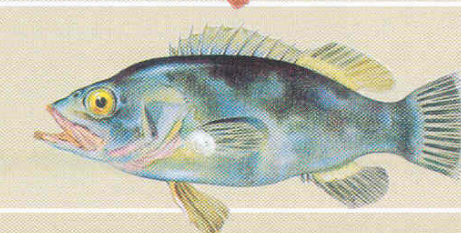
24 cm. (l.t.)  
8,5 cm. (l.c.)

30 cm.



**Rapas**  
(*Lophius spp.*)

45 cm.

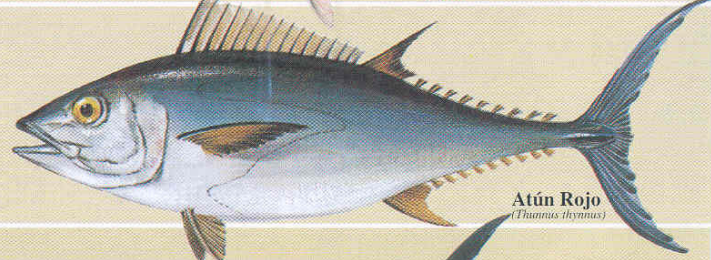


**Cherna**  
(*Polyprion americanus*)



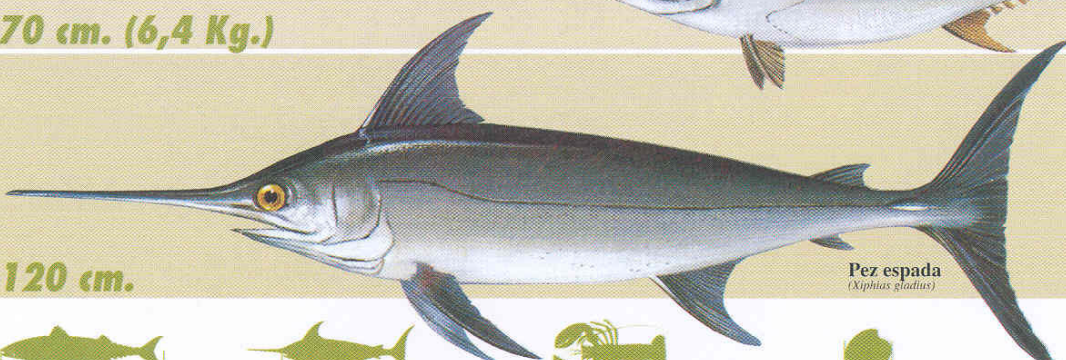
**Meros**  
(*Epinephus spp.*)

70 cm. (6,4 Kg.)



**Atún Rojo**  
(*Thunnus thynnus*)

120 cm.



**Pez espada**  
(*Xiphias gladius*)

